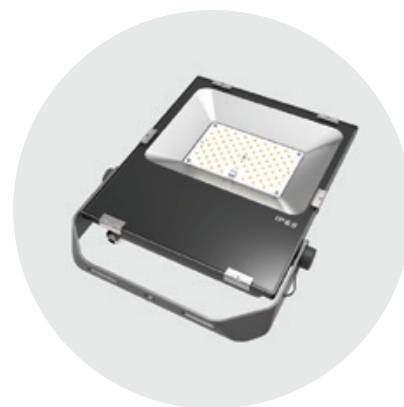


Luhnos

LED FLOODLIGHTS



Lighting characteristics

Light intensity: > 95%
Lifespan (L80): 50,000 h (Tp: 60°)
Photobiological Risk Group RG0 ("Exempt") (EN 62471:2006)

Mechanical characteristics

Body in die-cast aluminium
Tempered glass shield
International Protection Class IP65
Shock Protection IK08 (EN60529)

Electrical characteristics

AC input: 85/265V - 50/60Hz
Power factor: >90

Lamp characteristics

SMD LED chip
CRI Ra>80

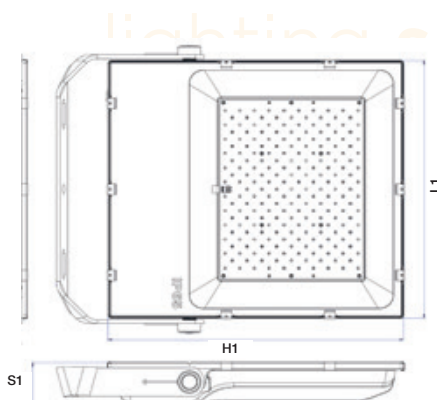
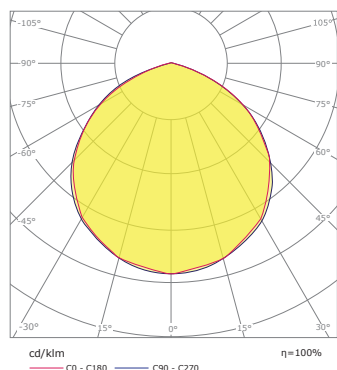
Accessories

Dimming 0-10V/DALI (sub-code D)

Regulations

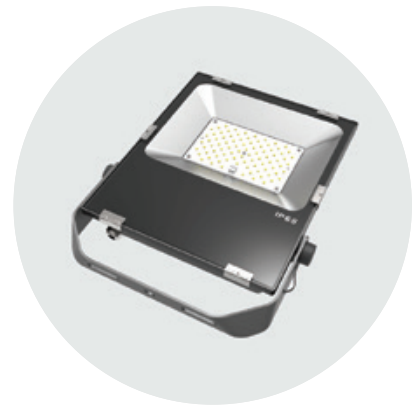
Produced in accordance with standards EN55015:2013, EN61547:2009, EN61000-3-2:2006+A1:2009+A2:2009, EN61000-3-3:2013, EN61000-4-2:2009, EN61000-4-3:2006+A2:2010, EN61000-4-4:2004+A1:2010, EN61000-4-5:2006, EN61000-4-6:2009, EN61000-4-8:2010, EN61000-4-11:2004, EN 60598-1:2008+A11:2009, EN 62471:2008, EN 62031:2008, IEC62321:2013, EN60529:1992, EN60598-1, EN 62262:2002, EN 12464-1

	30W	50W	80W	100W	150W	200W
S1 [mm]	40	47	49	53	53	60
L1 [mm]	167	220	245	295	330	360
H1 [mm]	200	265	300	345	365	400



The data have a tolerance level of +/-10% and are subject to modification without prior notice.
The pictures and dimensional parameters are merely an indication, and may differ from the end product.

Luhnos
LED FLOODLIGHTS



CODE	POWER [W]	COLOR [K]	EFFICIENCY [lm/W]
LH030927812	30	2700	90
LH030945812	30	4500	90
LH030965812	30	6500	90
LH050927812	50	2700	90
LH050945812	50	4500	90
LH050965812	50	6500	90
LH080927812	80	2700	90
LH080945812	80	4500	90
LH080965812	80	6500	90
LH100927812	100	2700	90
LH100945812	100	4500	90
LH100965812	100	6500	90
LH150927812	150	2700	90
LH150945812	150	4500	90
LH150965812	150	6500	90
LH200927812	200	2700	90
LH200945812	200	4500	90
LH200965812	200	6500	90